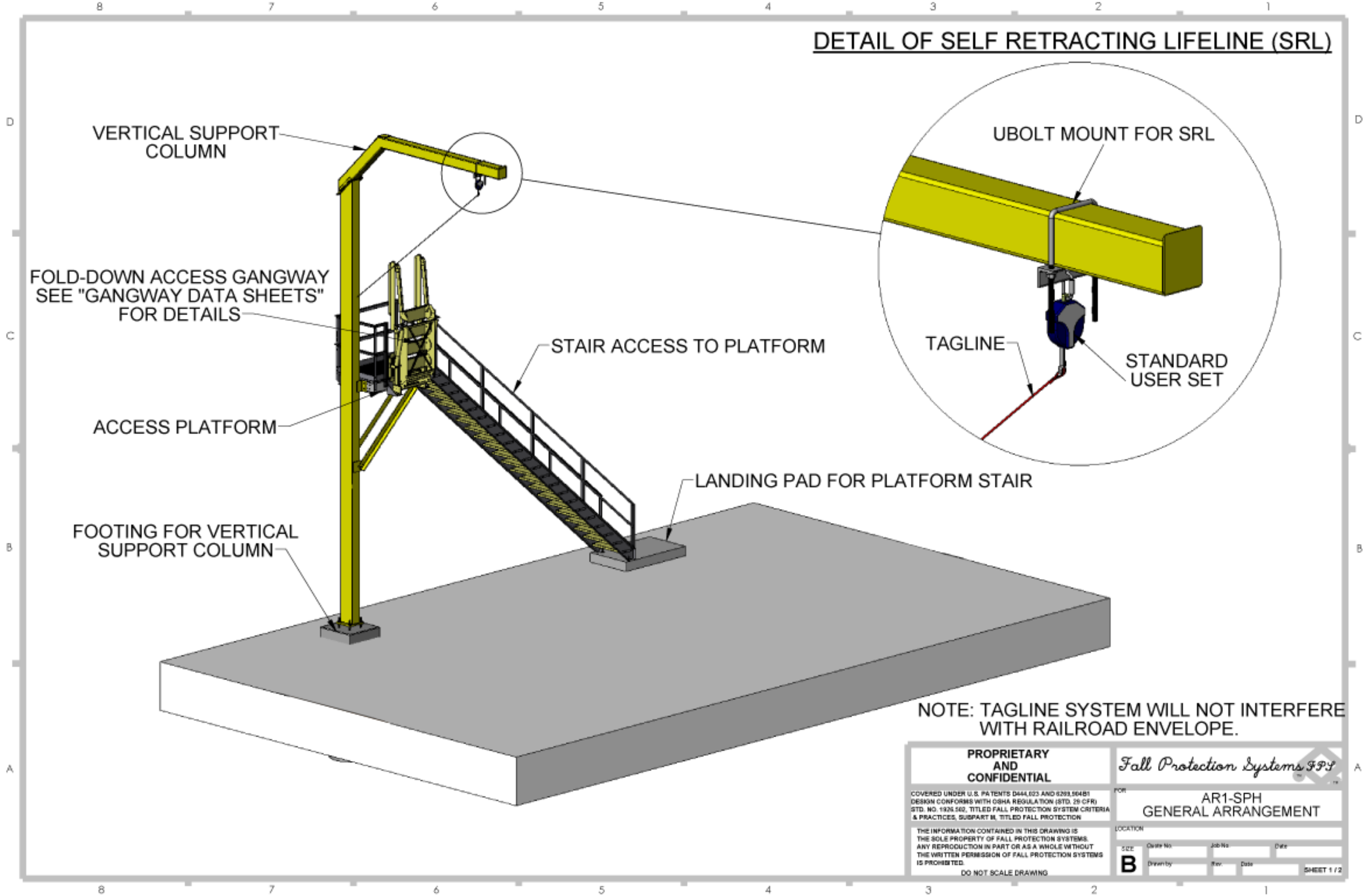
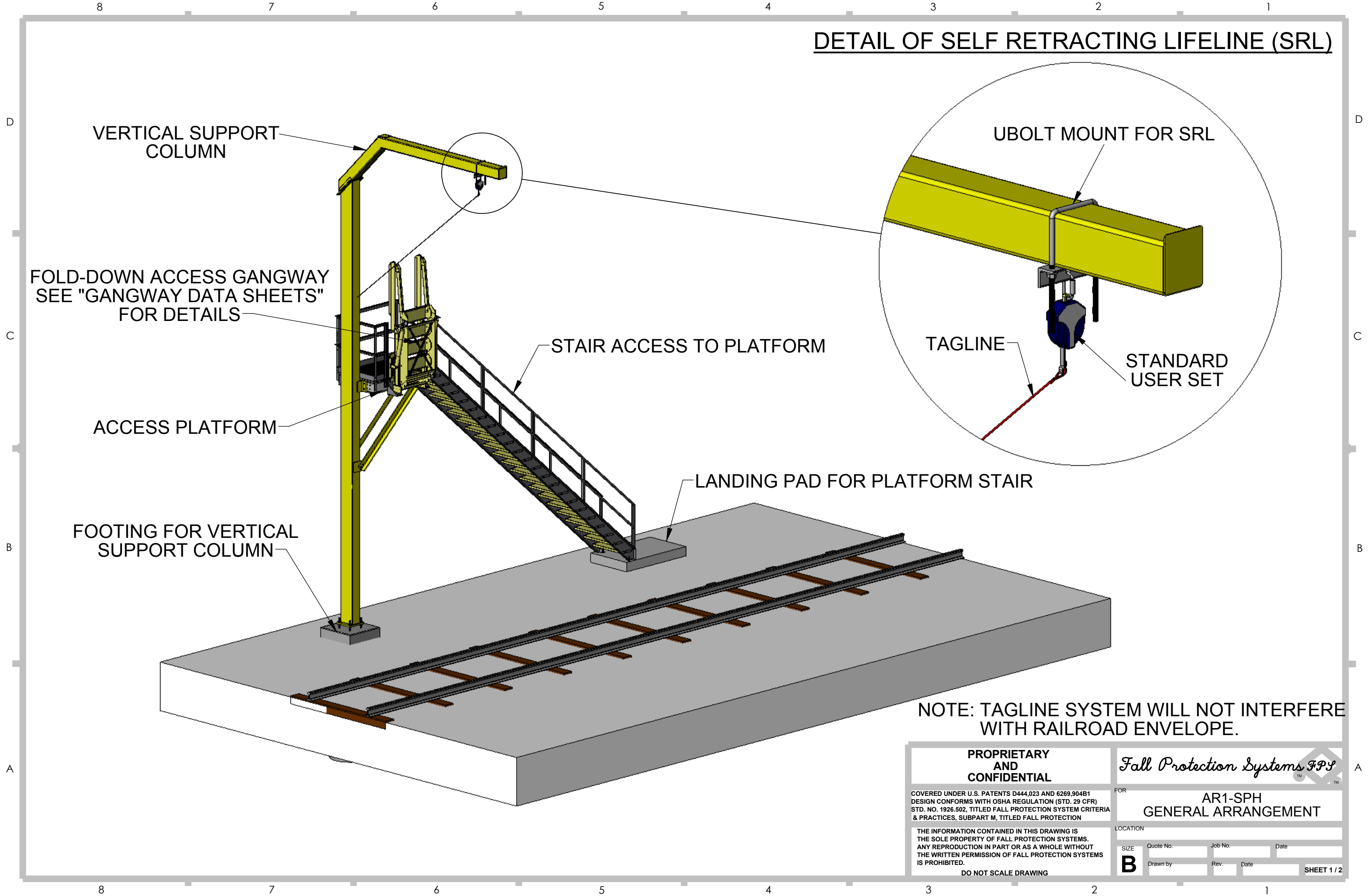


# DETAIL OF SELF RETRACTING LIFELINE (SRL)

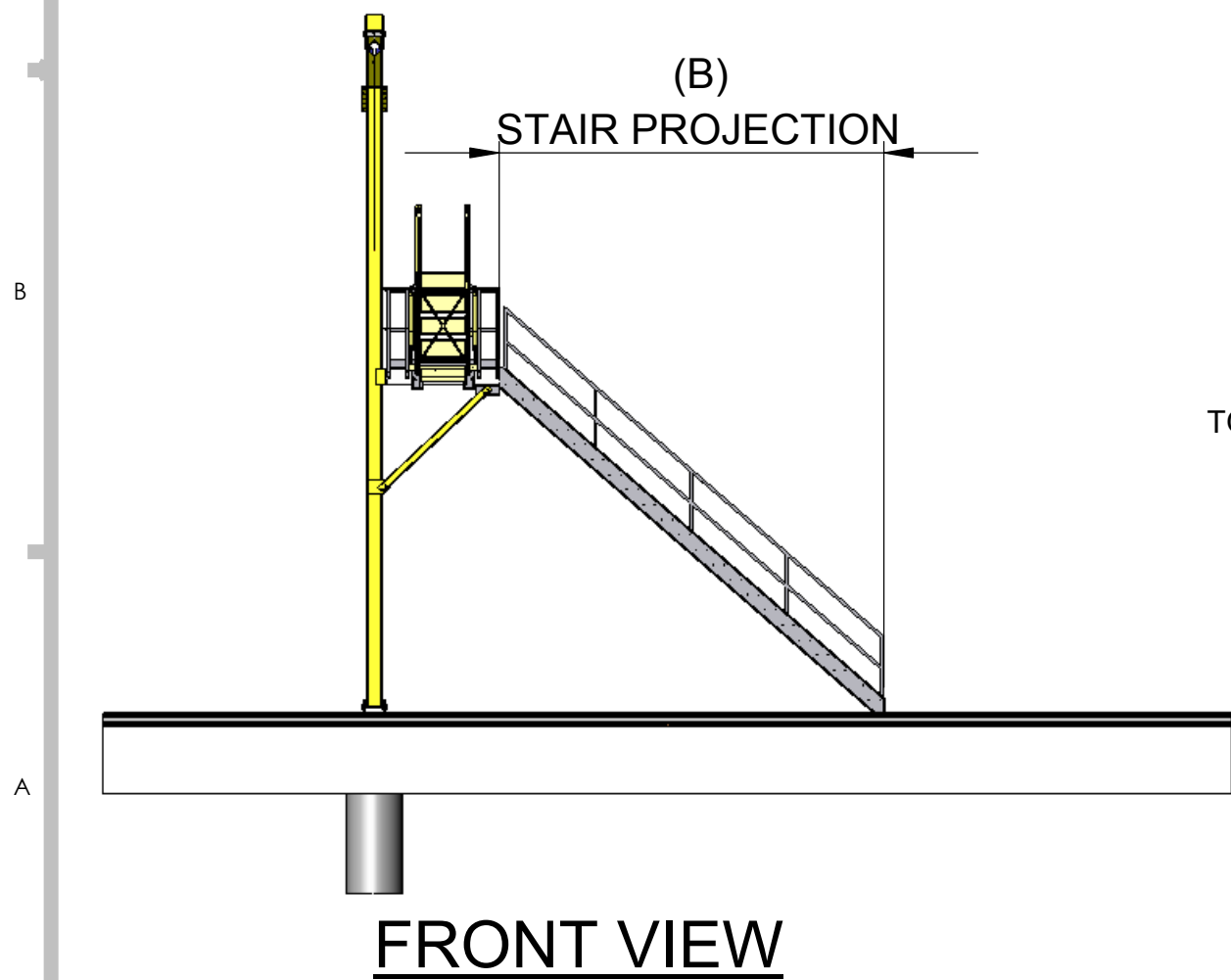
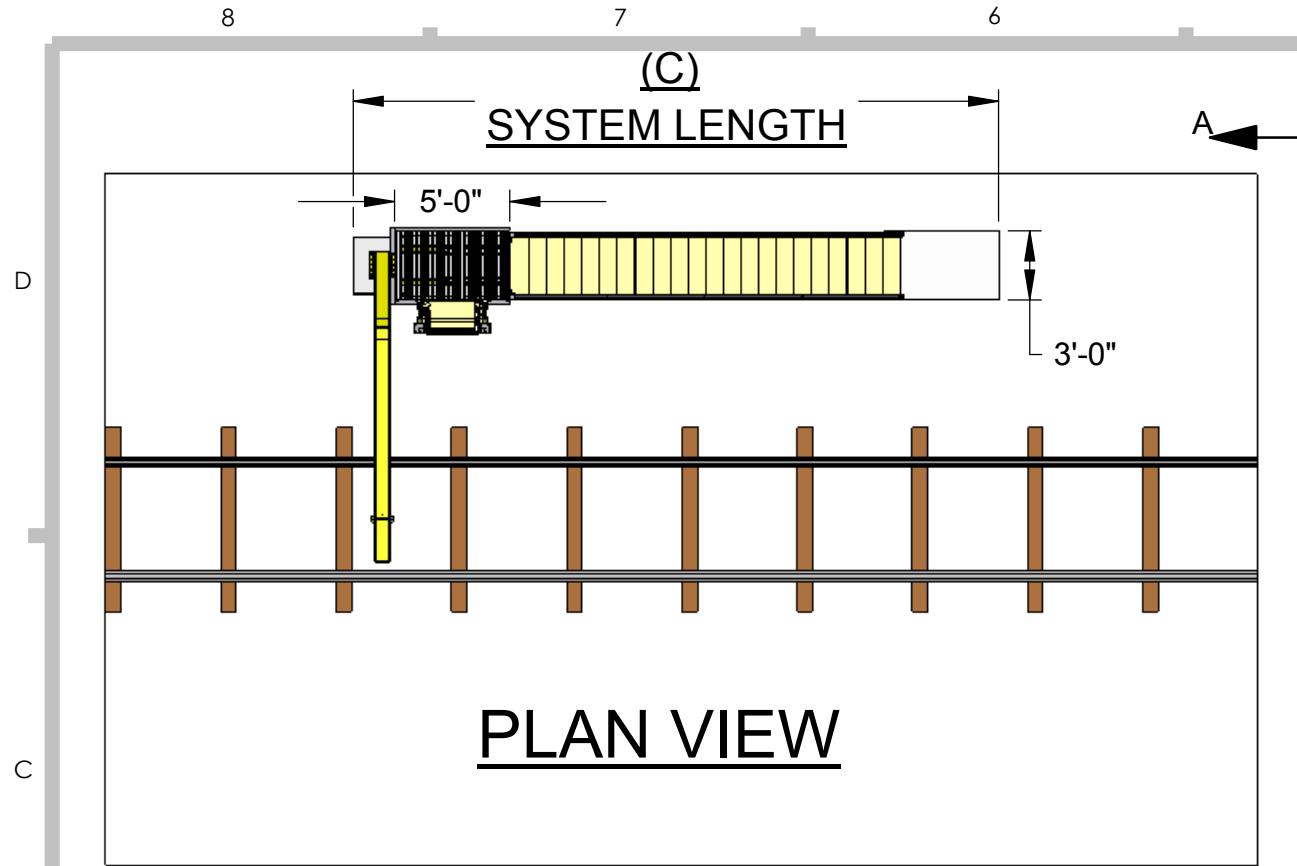


<p><b>PROPRIETARY AND CONFIDENTIAL</b></p> <p><small>COVERED UNDER U.S. PATENTS D444,023 AND 5,293,564B1 DESIGN CONFORMS WITH OSHA REGULATION (STD. 29 CFR) STD. NO. 1926.502, TITLED FALL PROTECTION SYSTEM CRITERIA &amp; PRACTICES, SUBPART M, TITLED FALL PROTECTION</small></p> <p><small>THE INFORMATION CONTAINED IN THIS DRAWING IS THE SOLE PROPERTY OF FALL PROTECTION SYSTEMS. ANY REPRODUCTION IN PART OR AS A WHOLE WITHOUT THE WRITTEN PERMISSION OF FALL PROTECTION SYSTEMS IS PROHIBITED.</small></p> <p>DO NOT SCALE DRAWING</p>	<p><i>Fall Protection Systems FPS</i></p>
	<p>FOR <b>AR1-SPH GENERAL ARRANGEMENT</b></p>
<p>LOCATION</p>	<p>DATE</p>
<p>SIZE <b>B</b></p>	<p>Job No. _____ Date _____ Rev. _____ Date _____</p>
<p>SHEET 1 / 2</p>	

# DETAIL OF SELF RETRACTING LIFELINE (SRL)

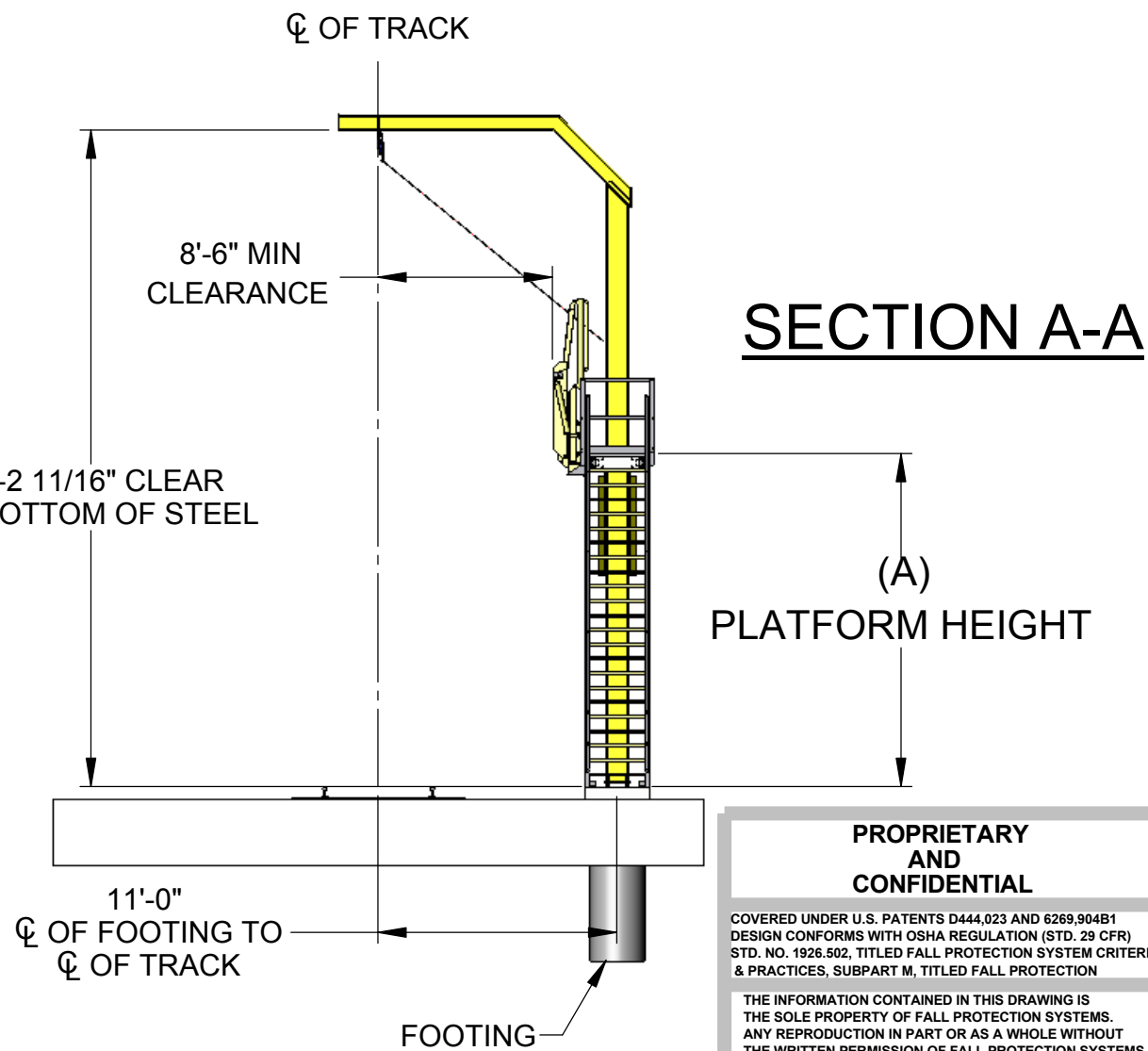


<p><b>PROPRIETARY AND CONFIDENTIAL</b></p> <p>COVERED UNDER U.S. PATENTS D444,023 AND 6269,904B1 DESIGN CONFORMS WITH OSHA REGULATION (STD. 29 CFR) STD. NO. 1926.502, TITLED FALL PROTECTION SYSTEM CRITERIA &amp; PRACTICES, SUBPART M, TITLED FALL PROTECTION</p> <p>THE INFORMATION CONTAINED IN THIS DRAWING IS THE SOLE PROPERTY OF FALL PROTECTION SYSTEMS. ANY REPRODUCTION IN PART OR AS A WHOLE WITHOUT THE WRITTEN PERMISSION OF FALL PROTECTION SYSTEMS IS PROHIBITED.</p> <p>DO NOT SCALE DRAWING</p>	<p><i>Fall Protection Systems FPS</i></p>	
	<p>FOR</p> <p><b>AR1-SPH</b></p> <p><b>GENERAL ARRANGEMENT</b></p>	
<p>LOCATION</p>		
<p>SIZE</p> <p><b>B</b></p>	<p>Quote No. _____</p> <p>Rev. _____</p>	<p>Job No. _____</p> <p>Date _____</p>
		<p>SHEET 1 / 2</p>



### FIG A. SYSTEM HEIGHTS AND PROJECTIONS

(A) PLATFORM HEIGHT	(B) STAIR STRINGER PROJECTION	(C) OVERALL SYSTEM LENGTH	CENTERLINE OF FOOTING TO CENTERLINE OF LANDING PAD
15'-4"	17'-0"	28'-2"	24'-5"
14'-8"	16'-3"	27'-5"	23'-8"
14'-0"	15'-6"	26'-8"	22'-11"
13'-4"	14'-9"	25'-10"	22'-2"
12'-8"	14'-0"	25'-1"	21'-4"
12'-0"	13'-3"	24'-4"	20'-7"
11'-4"	12'-4"	23'-7"	19'-10"



**PROPRIETARY AND CONFIDENTIAL**

COVERED UNDER U.S. PATENTS D444,023 AND 6269,904B1  
DESIGN CONFORMS WITH OSHA REGULATION (STD. 29 CFR)  
STD. NO. 1926.502, TITLED FALL PROTECTION SYSTEM CRITERIA  
& PRACTICES, SUBPART M, TITLED FALL PROTECTION

THE INFORMATION CONTAINED IN THIS DRAWING IS  
THE SOLE PROPERTY OF FALL PROTECTION SYSTEMS.  
ANY REPRODUCTION IN PART OR AS A WHOLE WITHOUT  
THE WRITTEN PERMISSION OF FALL PROTECTION SYSTEMS  
IS PROHIBITED.

DO NOT SCALE DRAWING

*Fall Protection Systems FPS*

FOR: **AR1-SPH  
GENERAL ARRANGEMENT**

LOCATION: \_\_\_\_\_

SIZE: **B** Quote No. \_\_\_\_\_ Job No. \_\_\_\_\_ Date \_\_\_\_\_

Drawn by: \_\_\_\_\_ Rev. \_\_\_\_\_ Date \_\_\_\_\_

SHEET 2 / 2